

# RD Italia

idea • forma • funzione



OUTDOOR  
**FURNISHINGS**

USA COLLECTION



MADE IN ITALY

# Powder Coat Finishes

## TEXTURED COLORS



9016  
Traffic white



7039  
Quartz grey



6027  
Light Green



6021  
Pale green



5015  
Sky blue



3028  
Pure Red



3016  
Coral red



2011  
Deep orange



1032  
Broom yellow



1019  
Grey beige



ANTHRACITE



BLACK



CORTEN



BRONZE

## RD ITALIA

RD Italia's manufacturing plant is located in the town of Breganze, near Venice, Italy. Thanks to the use of well established automated processes and production flexibility, RD Italia is able to quickly satisfy its customer's requests and needs.

The quality of the products manufactured by RD Italia is the result of research and innovation.

The constant application of the latest technology and the proven expertise of our partners in the area, to whom we entrust important stages of production, guarantee the solid performance and durability of our products.

All of our products are "Made in Italy" using quality steel with a high recycled content. Our steel is treated with a hot dipped galvanized zinc underlayer 20 times thicker than the industry standard. This cathodic protection prevents corrosion and acts as a sealant should the steel be exposed due to accidental damage to the polyester powder coat finish. For good measure a coat of RD Rust Shield is applied to the whole furniture frame prior to powder coating. Our products are backed by a one year warranty against manufacturing defects.

RD Italia operates in the most important markets of the world and has earned international recognition as a leader in manufacturing Outdoor Furnishings for the contract industry.

In North America our products are distributed from South Carolina where we stock items in our best-selling Anthracite (Graphite) and Bronze powder coat colors. Other custom powder coat colors can be ordered for a small upcharge.

All of our chairs are stackable and our tables disassemble for ease of storage and shipping.

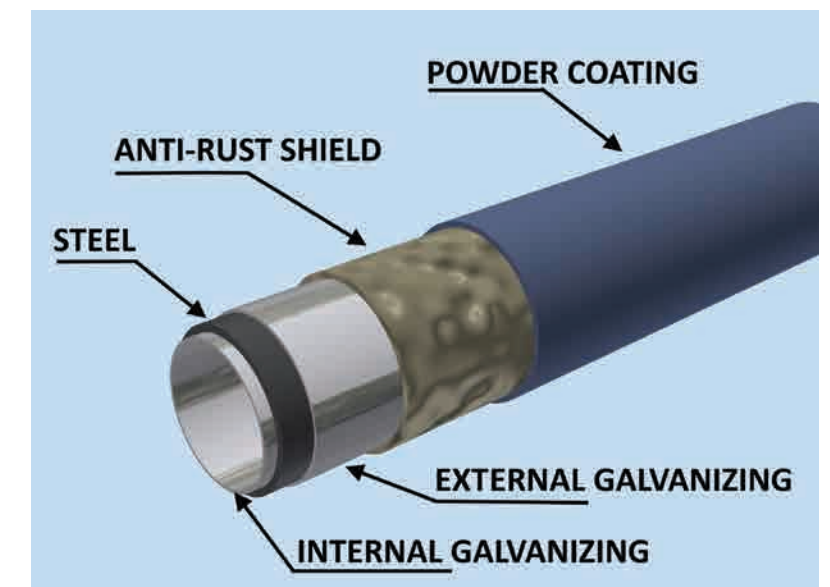
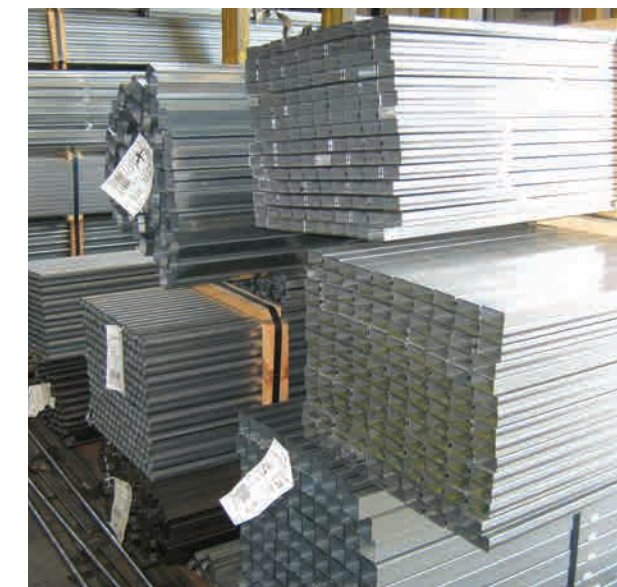
Replacement parts are available for all our commercial-grade umbrellas. We offer a factory-direct drop-ship program and competitive pricing. No order is too small!

### RD USA

tel 720-283-3327

info@rd-usa.com

www.rd-usa.com







MADE IN ITALY



# Calia



## STACKABLE CHAIR

Pre-galvanized steel frame and seat. Polyester powder coated finish.

## ARMCHAIR

Size: 22 ¾ x 20 ½ x H 29 ½ inch

58 x 52 x H 75 cm

Weight: 10.6 lbs - 4.8 Kg

## FINISH



Standard: Anthracite



see RAL codes on page 2

seating







MADE IN ITALY



# Piuma



## STACKABLE CHAIR

Pre-galvanized steel frame and seat. Polyester powder coated finish.

### CHAIR

Size: 20 ½ x 22 ½ x H31 ½ inch  
52 x 57 x H80 cm  
Weight: 8,2 lbs - 3,7 Kg

### ARMCHAIR

Size: 20 ½ x 22 ½ x H31 ½ inch  
52 x 57 H80 cm  
Weight: 8,4 lbs - 3,8 Kg

### BAR STOOL

Size: 19 ¾ x 19 ¾ x H10¼ inch  
50 x 50 x H102 cm  
Weight: 9,7 lbs - 4,4 Kg

## FINISH



Standard: Anthracite



see RAL codes on page 2

seating







MADE IN ITALY

# Fancy Leaf

seating



## STACKABLE CHAIR

Pre-galvanized steel frame and seat. Polyester powder coated finish.

### CHAIR

Size: 20 1/2 x 23 1/4 x H32 3/4 inch  
52 x 59 x H83 cm  
Seat Height: 17 3/4 inch - 45 cm  
Weight: 11 lbs - 5 Kg

### ARMCHAIR

Size: 20 3/4 x 23 1/4 x H32 3/4 inch  
53 x 59 x H83 cm  
Seat Height: 17 3/4 inch - 45 cm  
Weight: 11.9 lbs - 5.4 Kg

### BAR STOOL

Size: 21 3/4 x 23 1/4 x H46 3/4 inch  
55 x 59 x H119 cm  
Seat Height: 29 1/2 inch - 75 cm  
Weight: 14.1 lbs - 6.4 Kg

## FINISH



Standard: Anthracite



see RAL codes on page 2





MADE IN ITALY

# Dorio

seating



## STACKABLE CHAIR

Pre-galvanized steel frame and seat. Polyester powder coated finish.

### CHAIR

Size: 18 x 22 ¾ x H33 inch  
46 x 58 x H84 cm  
Seat Height: 17 ¾ inch - 45 cm  
Weight: 13.9 lbs - 6.3 Kg

### ARMCHAIR

Size: 21 ¼ x 22 ¾ x H33 inch  
54 x 58 x H84 cm  
Seat Height: 17 ¾ inch - 45 cm  
Weight: 17.2 lbs - 7.9 Kg

### BAR STOOL

Size: 18 x 19 ¾ x H41 ¾ inch  
46 x 50 x H106 cm  
Seat Height: 29 ½ inch - 75 cm  
Weight: 15.5 lbs - 7.1 Kg

## FINISH



Standard: Anthracite



see RAL codes on page 2





MADE IN ITALY

# Lola



## STACKABLE CHAIR

Pre-galvanized steel frame and seat. Polyester powder coated finish.

### CHAIR

Size: 17 ¼ x 20 x H33 inch  
44 x 51 x H84 cm  
Seat Height: 17 ¾ inch - 45 cm  
Weight: 10.8 lbs - 4.9 Kg

### ARMCHAIR

Size: 21 ¼ x 22 ¾ x H33 inch  
56 x 56 x H84 cm  
Seat Height: 17 ¾ inch - 45 cm  
Weight: 14.3 lbs - 6.6 Kg

### BAR STOOL

Size: 19 ¾ x 19 ¾ x H41 ¾ inch  
46 x 50 x H106 cm  
Seat Height: 29 ½ inch - 75 cm  
Weight: 17.2 lbs - 7.9 Kg

## FINISH



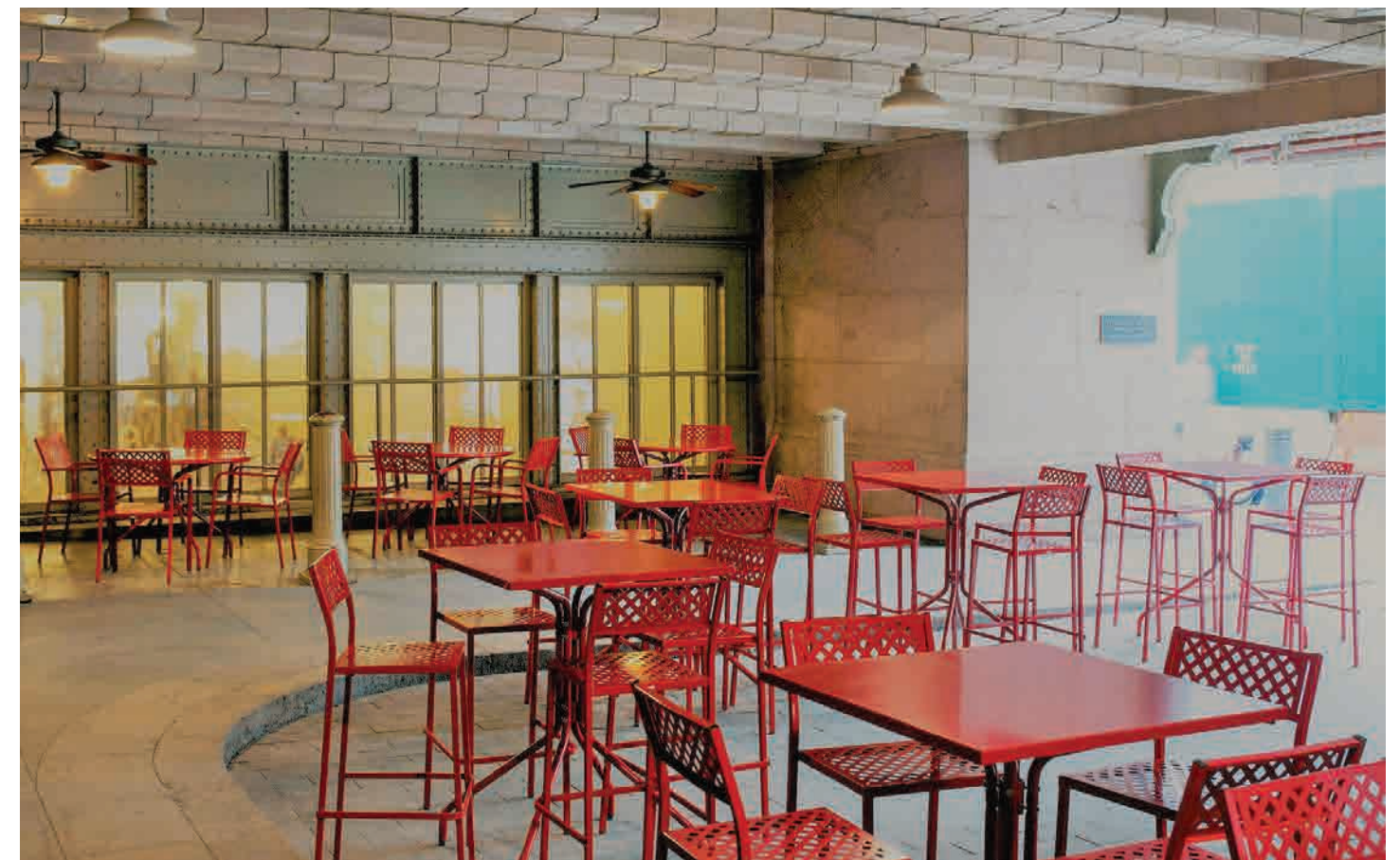
Standard: Anthracite



see RAL codes on page 2



seating







MADE IN ITALY

# Syrene

seating



## STACKABLE CHAIR

Pre-galvanized steel frame and seat. Polyester powder coated finish.

### CHAIR

Size: 21 ¾ x 24 ½ x H33 inch  
55 x 62 x H84 cm  
Seat Height: 17 ¾ inch - 45 cm  
Weight: 10.3 lbs - 4.7 Kg

### ARMCHAIR

Size: 22 x 24 ½ x H33 inch  
56 x 62 x H84 cm  
Seat Height: 17 ¾ inch - 45 cm  
Weight: 11 lbs - 5 Kg

### BAR STOOL

Size: 21 ¾ x 24 ½ x H47 ¼ inch  
55 x 62 x H120 cm  
Seat Height: 29 ½ inch - 75 cm  
Weight: 13.9 lbs - 6.3 Kg

## FINISH



Standard: Anthracite



see RAL codes on page 2





MADE IN ITALY

# Sonia

seating



## STACKABLE CHAIR

Pre-galvanized steel frame and seat. Polyester powder coated finish.

### CHAIR

Size: 21 ¾ x 24 ½ x H33 inch  
55 x 62 x H84 cm  
Seat Height: 17 ¾ inch - 45 cm  
Weight: 11.9 lbs - 5.4 Kg

### ARMCHAIR 2 stretchers

Size: 22 x 24 ½ x H33 inch  
56 x 62 x H84 cm  
Seat Height: 17 ¾ inch - 45 cm  
Weight: 12.5 lbs - 5.7 Kg

### BAR STOOL

Size: 21 ¾ x 24 ½ x H47 ¼ inch  
55 x 62 x H120 cm  
Seat Height: 29 ½ inch - 75 cm  
Weight: 15.4 lbs - 7.0 Kg

## FINISH



Standard: Anthracite



see RAL codes on page 2







MADE IN ITALY

# Pop



PATENTED

## STACKABLE CHAIR

Pre-galvanized steel frame and seat. Polyester powder coated finish.

### CHAIR

Size: 19 3/4 x 20 3/4 x H30 1/4 inch  
50 x 53 x H77 cm  
Seat Height: 17,5 inch - 44,5 cm  
Weight: 11.2 lbs - 5.1 Kg

### ARMCHAIR

Size: 21 3/4 x 20 3/4 x H30 1/4 inch  
55 x 53 x H77 cm  
Seat Height: 17,5 inch - 44,5 cm  
Weight: 12.7 lbs - 5.75 Kg

### BAR STOOL

Size: 19 1/4 x 18 x H39 3/4 inch  
49 x 46 x H101 cm  
Seat Height: 17,5 inch - 44,5 cm  
Weight: 12.6 lbs - 5.7 Kg

## FINISH



Standard: Anthracite



see RAL codes on page 2

seating







MADE IN ITALY

# La Rotonda

DESIGNER:  
HARARI ITAMAR

*H. Itamar*



PATENTED

## STACKABLE CHAIR

Pre-galvanized steel frame and seat. Polyester powder coated finish.

### CHAIR

Size: 20 x 20 x H33 inch  
55 x 51 x H84 cm  
Seat Height: 17 ¾ inch - 45 cm  
Weight: 11 lbs - 5 Kg

### ARMCHAIR

Size: 21 ¾ x 20 x H33 inch  
51 x 51 x H84 cm  
Seat Height: 17 ¾ inch - 45 cm  
Weight: 10.6 lbs - 4.8 Kg

### BAR STOOL

Size: 23 ½ x 22 ½ x H46 inch  
60 x 57 x H117 cm  
Seat Height: 29 ½ inch - 75 cm  
Weight: 14 lbs - 6.4 Kg

## FINISH



Standard: Anthracite



see RAL codes on page 2

seating







MADE IN ITALY

# Bistrò

seating



## STACKABLE CHAIR

Pre-galvanized steel frame and seat. Polyester powder coated finish.

### CHAIR

Size: 15 ¾ x 19 ¾ x H34 ¼ inch  
40 x 50 x H87 cm  
Seat Height: 18 inch - 46 cm  
Weight: 10.80 lbs - 4.9 Kg

### BAR STOOL

Size: 15 ¾ x 19 ¾ x H42 ½ inch  
40 x 50 x H108 cm  
Seat Height: 29 ½ inch - 75 cm  
Weight: 13.20 lbs - 6 kg



## FINISH



Standard: Anthracite



see RAL codes on page 2





MADE IN ITALY

# Dorio



## FOLDING FURNITURE

Pre-galvanized steel frame and polyester coating.

### FOLDING CHAIR

Size: 16 ½ x 19 ½ x H32 inch  
42 x 49 x H81 cm  
Weight: 13 lbs - 6 Kg

### FOLDING TABLE

Pre-galvanized steel frame and polyester coating.  
Adjustable feet.

#### 80X80

Size: 31½ x 31½ x H29½ inch  
80 x 80 x H75 cm  
Weight: 28.7 lbs - 13 Kg

#### 160X80

Size: 63 x 31 ½ x H 29½ inch  
160 x 80 x H75 cm  
Weight: 49.6 lbs - 22 Kg

## FINISH



Standard: Anthracite



see RAL codes on page 2

seating







MADE IN ITALY

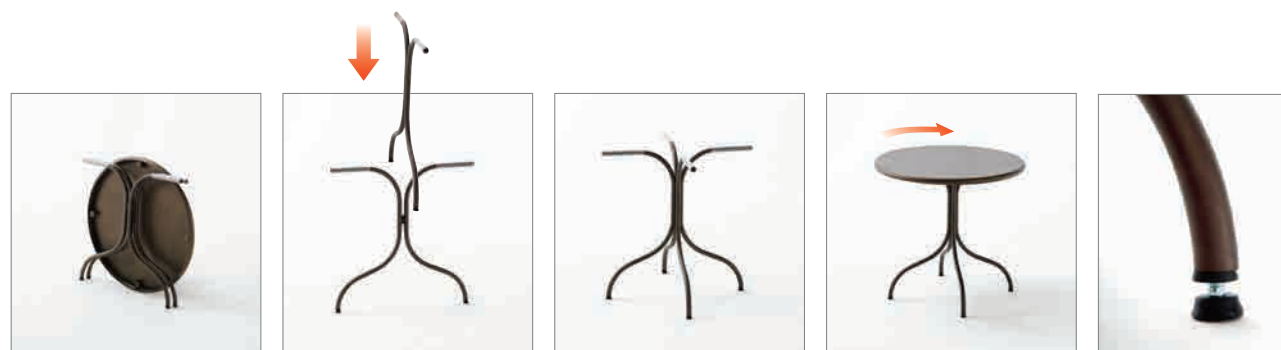
# Bistrot



BISTROT 80T



BISTROT 80L



## DISASSEMBLABLE TABLE

Pre-galvanized steel frame and punched or full steel top. Polyester powder coated finish. Four adjustable glides.

### BISTROT 80T (32" ROUND)

Size: Ø31 ½ x H29 ½ inch  
Ø80 x H75 cm  
Weight: 20.7 lbs - 9.4 Kg

### BISTROT 80L (32" ROUND)

Size: Ø31 ½ x H29 ½ inch  
Ø80 x H75 cm  
Weight: 22.4 lbs - 10.4 Kg

## FINISH



Standard: Anthracite



see RAL codes on page 2

# Dorio

tables



DORIO 120H



DORIO 60H



DORIO 80H



DORIO 60



DORIO 80



DORIO 120

## TALL TABLE

Pre-galvanized steel frame and steel top. Polyester powder coated finish. Two adjustable glides.

### DORIO 60H (24"X32") TALL

Size: 23 ½ x 31 ½ x H41 inch  
60 x 80 x H105 cm  
Weight: 39.6 lbs - 18 Kg

### DORIO 80H (32"X32") TALL

Size: 31 ½ x 31 ½ x H41 inch  
80 x 80 x H105 cm  
Weight: 42 lbs - 19 Kg

### DORIO 120H (48"X32") TALL

Size: 31 ½ x 47 ¼ x H41 inch  
80 x 120 x H105 cm  
Weight: 57 lbs - 25.8 Kg

## FINISH



Standard: Anthracite



see RAL codes on page 2

## STACKABLE TABLE

Pre-galvanized steel frame and d steel top. Polyester powder coated finish. Two adjustable glides.

### DORIO 60 (24"X32")

Size: 23 ½ x 31 ½ x H29 ½ inch  
60 x 80 x H75 cm  
Weight: 57 lbs - 13.2 Kg

### DORIO 80 (32"X32")

Size: 31 ½ x 31 ½ x H29 ½ inch  
80 x 80 x H75 cm  
Weight: 36 lbs - 16 Kg

### DORIO 120 (48"X32")

Size: 31 ½ x 47 ¼ x H29 ½ inch  
80 x 120 x H75 cm  
Weight: 43 lbs - 19.4 Kg





MADE IN ITALY

# Estate



ESTATE 60



ESTATE 80

ESTATE 80H



MADE IN ITALY

# Estate



ESTATE 110



ESTATE 90

ESTATE 120

## TABLE

Pre-galvanized steel frame and punched steel top. Polyester powder coated finish.  
Four adjustable glides.

### ESTATE 60 (24"X32")

Size: 23 1/2 x 31 1/2 x H29 1/2 inch  
60 x 80 x H75 cm  
Weight: 19.4 lbs - 8.8 Kg

### ESTATE 80 (32"X32")

Size: 31 1/2 x 31 1/2 x H29 1/2 inch  
80 x 80 x H75 cm  
Weight: 30.4 lbs - 13.8 Kg

### ESTATE 80H (32"X32") TALL

Size: 31 1/2 x 31 1/2 x H40 1/2 inch  
80 x 80 x H103 cm  
Weight: 33.5 lbs - 15.2 Kg

## FINISH



Standard: Anthracite



see RAL codes on page 2

## STEEL TABLE

Pre-galvanized steel frame and punched steel top. Polyester powder coated finish.  
Four adjustable glides.

### ESTATE 90 (36"X36")

Size: 35 1/2 x 35 1/2 x H29 1/2 inch  
90 x 90 x H75 cm  
Weight: 33 lbs - 15 Kg

### ESTATE 110 (43" ROUND)

Size: Ø43 1/4 x H29 1/2 inch  
Ø110 x H75 cm  
Weight: 41.9 lbs - 19 Kg

### ESTATE 120 (48"X32")

Size: 47 1/4 x 31 1/2 x H29 1/2 inch  
120 x 80 x H75 cm  
Weight: 43 lbs - 19.5 Kg

## FINISH



Standard: Anthracite



see RAL codes on page 2





MADE IN ITALY

# Table Tops



## STEEL TABLETOPS

Pre-galvanized steel. Polyester powder coated finish.

Ø 23½, Ø 31½ inch - Ø 60, Ø 80 cm  
23½x23½, 23½x31½, 27½x27½, 31½x31½ inch  
60x60, 60x80, 70x70, 80x80 cm

## FINISH



Standard:  
Anthracite



see RAL codes on page 2



## SPRITZ BASE

Pre-galvanized steel. Polyester powder coated finish. Adjustable glides.

Ø 15 ¾ x H28 ¼ inch, 21.4 lbs - Ø 40 x H72 cm, 9.7 Kg  
For tabletop Ø 23½ inch, 8 lbs - Ø 60 cm 3.6 Kg

## FINISH



Standard:  
Anthracite



see RAL codes on page 2



MADE IN ITALY

# Table Bases

tables



GIN XL 73



GIN XL 103



## GIN BASE

Pre-galvanized steel. Polyester powder coated finish. Adjustable glides.

**GIN XL 73:** 17¾x17¾xH28¾ inch, 35.2 lbs - 45x45xH73 cm, 16.3 Kg

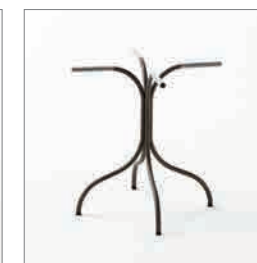
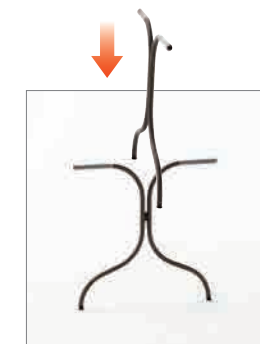
**GIN XL 103:** 17¾x17¾xH40 inch, 36.9 lbs - 45x45xH103 cm, 16.8 Kg

For most tabletops.

## FINISH



Standard: Anthracite



## BISTROT 70 BASE

Pre-galvanized steel. Polyester powder coated finish. Adjustable glides.

27½ x 27½ x H28 inch, 7.7 lbs - 70 x 70 x H71 cm, 3.5 Kg

For tabletops 23½ x 31½, 31½ x 31½ inch - 60 x 80, 80 x 80 cm

## FINISH



Standard: Anthracite





MADE IN ITALY

# Lava Top

by Domiziani

DOMIZIANI  
CONTRACT DESIGN

tables



Cod 164

## LAVA STONE TABLETOP

Weather, scratch and fade resistant.  
Hand painted ceramic fired glaze on  
 $\frac{3}{8}$ " thick solid lava stone slab.  
Custom colors and designs are  
possible upon request.  
To be paired with SPALATO base.

### LAVA TOP 60 (24"x32")

Size: 23 ½ x 31 ½ x H29 inch  
Weight: 33 lbs

### LAVA TOP 80 (32"x32")

Size: 23 ½ x 31 ½ x H29 inch  
Weight: 42 lbs

### LAVA TOP 90 (36"x36")

Size: 35 ½ x 35 ½ x H29 inch  
Weight: 56 lbs



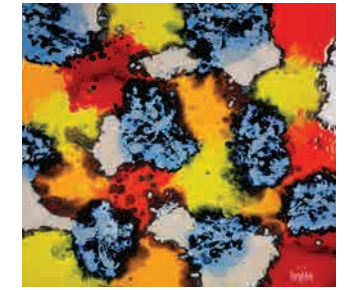
Cod 198



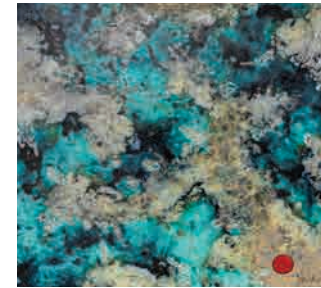
Cod 15 Fuoco magma



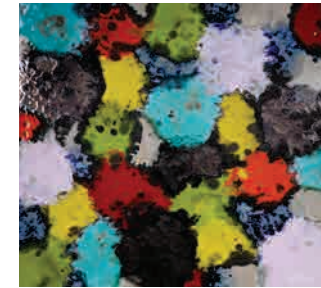
Cod 151 Lanzarote



Cod 156 Fuoco zenith



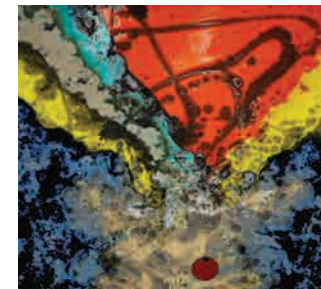
Cod 164 Luna rossa



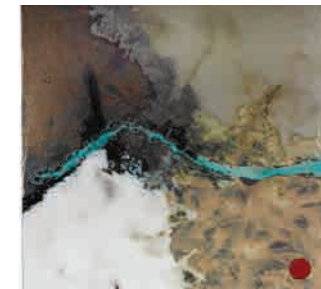
Cod 165 Terra Positano notte



Cod 167 Terra roccia



Cod 178 Aria tramonto



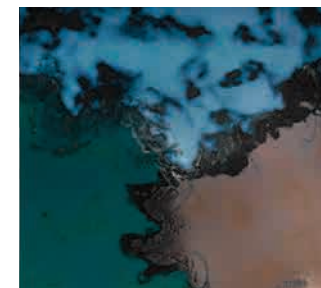
Cod 187 Roccia + turchese



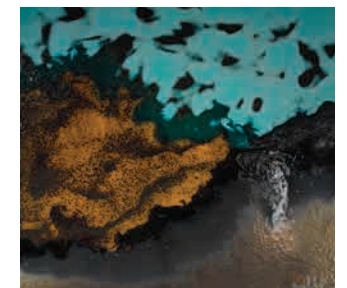
Cod 194 Terra roccia nero



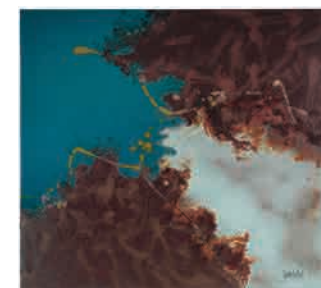
Cod 198 Acqua malta



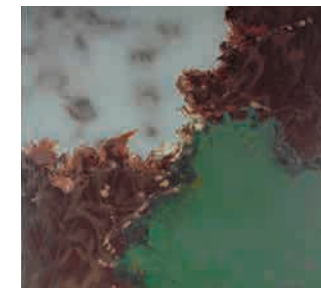
Cod 199 Acqua bajkal



Cod 203 Acqua eolie



Cod 210 Terra tuz



Cod 214 Terra ande



Cod 246 Terra yellowstone





MADE IN ITALY



# Spalato Base

by Domiziani

DOMIZIANI  
CONTRACT DESIGN



## SPALATO STEEL

Pre-galvanized steel frame.  
Polyester power coated finish.  
Four adjustable glides.

### SPALATO 60 (24X32")

Size: 23 ½ x 31 ½ x H29 inch  
Weight: 17.4 lbs - 7.9 kg

### SPALATO 80 (32"X32")

Size: 31 ½ x 31 ½ x H29 inch  
Weight: 19 lbs - 8.5kg

### SPALATO 90 (36"X36")

Size: 35 ½ x 35 ½ x H29 inch  
Weight: 20 lbs - 9.0kg

## SPALATO INOX

Stainless steel frame.  
Polyester power coated finish.

### SPALATO INOX 60 (24X32")

Size: 23 ½ x 31 ½ x H29 inch  
Weight: 11 lbs - 5kg

### SPALATO INOX 80 (32"X32")

Size: 31 ½ x 31 ½ x H29 inch  
Weight: 13.2 lbs - 6kg

### SPALATO INOX 90 (36"X36")

Size: 35 ½ x 35 ½ x H29 inch  
Weight: 14.3 lbs - 6.5kg

## FINISH



Standard:  
Anthracite



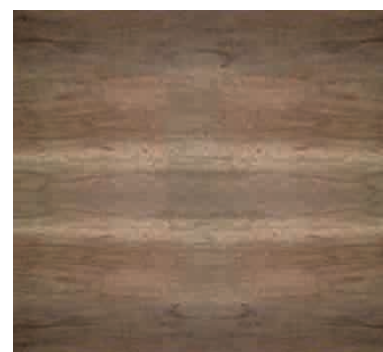
see RAL codes on page 2



MADE IN ITALY

# HPL Top

tables



Cod 206 Wood



Cod 115 Concrete



Cod 314 Calcutta Marble

## HIGH PRESSURE LAMINATE (HPL)

Weather resistant, HPL is considered to be one of the most durable decorative surface materials, with special performance properties that include chemical, fire and wear resistance.

To be paired with SPALATO base.

### HPL TOP 60 (24X32")

Size: 23 ½ x 31 ½ x H0,39 inch  
Weight: 19 lbs

### HPL TOP 80 (32"X32")

Size: 31 ½ x 31 ½ x H0,39 inch  
Weight: 25 lbs

### HPL TOP 90 (36"X36")

Size: 35 ½ x 35 ½ x H0,39 inch  
Weight: 31,5 lbs

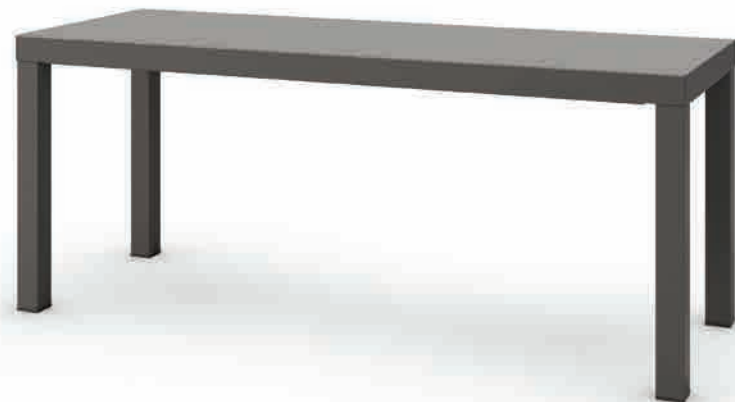






MADE IN ITALY

# Dorio Bench



## BENCH

Pre-galvanized steel frame and polyester coating.

### DORIO BENCH 100

Size: 40 x 15 ¾ x H17 ¾ inch

100 x 40 x H45 cm

Weight: 30 lbs - 13.6 Kg

## FINISH

Standard:  
Anthracite



see RAL codes on page 2

# Umbrella Bench

bench



## UMBRELLA BENCH

Pre-galvanized steel frame and polyester coating.

Size: 47 ¼ x 23 ½ x H17 ¾ inch

120 x 60 x H45 cm

Weight: 35 lbs - 15.9 Kg

## FINISH

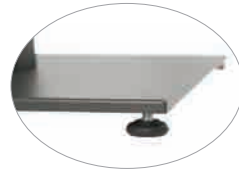
Standard:  
Anthracite





MADE IN ITALY

# Venezia



## TABLE & UMBRELLA BASE COMBO

24 1/2 x 24 1/2 x H28 1/2 inch, 90 lbs – 62 x 62 x H72 cm, 40 Kg

Suitable for most tabletops with umbrella hole:

31 1/2 x 31 1/2, 35 1/2 x 35 1/2 inch - 80 x 80, 90 x 90 cm



umbrellas

# Marina

by Scolari



## MARKET UMBRELLA

Commercial grade powder coated aluminum frame.

**Sunbrella canopy options.** Pole fits in tables.

### 7'X7'

Size: 6'7" x 6'7", Height: 8', Pole: Ø 1 9/16"

Umbrella Weight: 20 lbs

Low-profile Galvanized Base: 80 lbs

### 8'X8'

Size: 7'10" x 7'10", Height: 8', Pole: Ø 1 9/16"

Umbrella Weight: 22 lbs

Low-profile Galvanized Base: 80 lbs

### 10'X10' Telescopic Clears tables when closed

Size: 9'10" x 9'10", Height: 9'2", Pole: Ø 1 9/16"

Umbrella Weight: 40 lbs

Low-profile Galvanized Base: 80 lbs

### 10' ROUND

Size: 9'10" Octagon, Height: 8', Pole Ø 9/16"

Umbrella Weight: 26 lbs

Low Profile Galvanized Base: 80 lbs



NEW  
MODEL

# Lido

by Scolari



## **PUSH-UP MARKET UMBRELLA**

No ropes or pulleys.  
Commercial grade power coated aluminum frame.  
**Sunbrella canopy options.** Pole fits in table.

### **7'X7'**

Size: 6'7" x 6'7", Height: 8', Pole: Ø 1 9/16"  
Umbrella Weight: 20 lbs  
Low-profile Galvanized Base: 80 lbs

### **8' ROUND**

Size: 7'10" Hexagon, Height: 8' Pole: Ø 1 9/16"  
Umbrella Weight: 20 lbs  
Low-profile Galvanized Base: 80 lbs



umbrellas





# Astro

by Scolaro

umbrellas



## RETRACTABLE UMBRELLA

Commercial grade powder coated aluminum frame. Rotates 360°. Smooth hydraulic gas piston movement.

**Sunbrella canopy options.** LED light option.

### 10'X10'

Size: 9'10"x9'10", Height: 9'4"

Umbrella Weight: 99 lbs

Required ballast + Cover: 600 lbs

### 10'X13'

Size: 9'10"x13'1", Height: 9'4"

Umbrella Weight: 120 lbs

Required ballast + Cover: 600 lbs

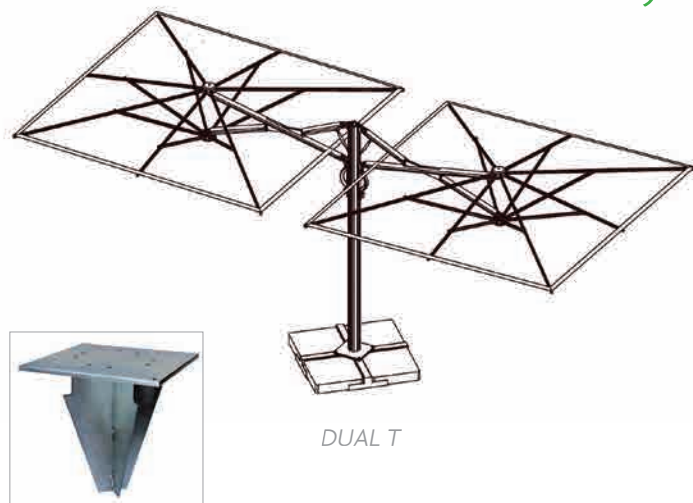




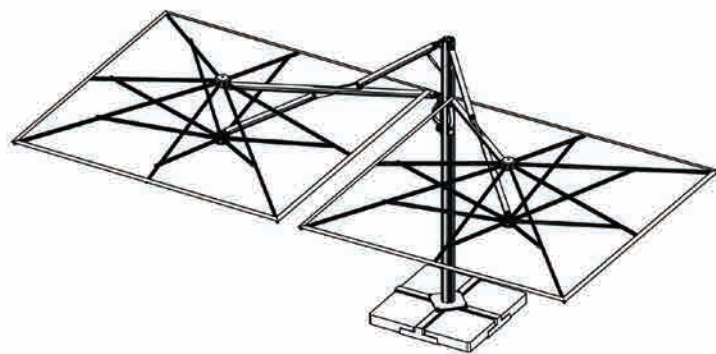


# Dual T & Dual V

by Scolaro



DUAL T



DUAL V



BTB Ground Mount

## DOUBLE RETRACTABLE UMBRELLA

Commercial grade powder coated aluminum frame.  
Smooth hydraulic gas piston movement.

**Sunbrella Canopy options.** LED light option.

### 10'X20'

Size: 9'10" x 19'8", Height 9'4"

Umbrella Weight: 264 lbs

Required ballast + Cover: 600 lbs

### 13'X26' (DUAL T ONLY)

Size: 11.5' x 36' a 11.5' x 23'

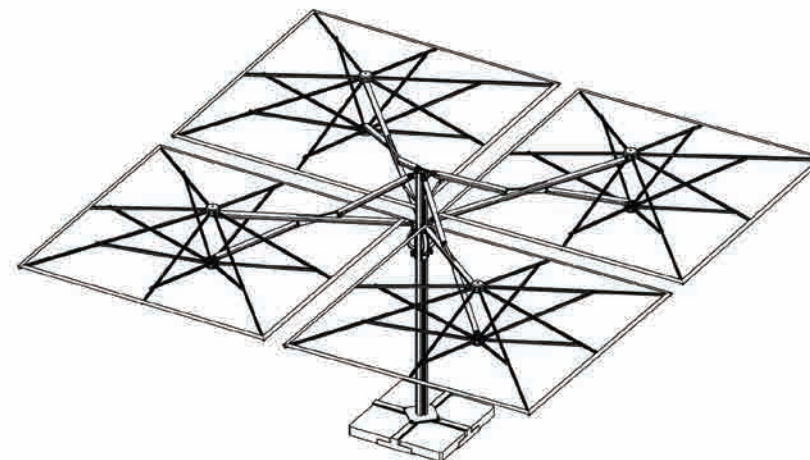
Umbrella Weight: 275 lbs

Required ballast + Cover: 600 lbs



# Quattro

by Scolaro



BTB Ground Mount

## QUADRUPLE RETRACTABLE UMBRELLA

Commercial grade powder coated aluminum frame.  
Smooth hydraulic gas piston movement.

**Sunbrella Canopy options.** LED light option.

### 20'X20'

Size: 19'8" x 19'8", Height 9'4"

Umbrella Weight: 198 lbs

Required ballast + Cover: 600 lbs







BTB Ground Mount

## GIANT TELESCOPIC UMBRELLA

Commercial grade powder coated aluminum frame. Sunbrella canopy options.

**Clears tables when closed.** LED light option.

### 13'X13'

Size: 13'1" x 13'1"; Height: 10'6"

Umbrella Weight: 55 lbs

Required Base: 160 lbs

### 17'X17'

Size: 16'5" x 16'6"; Height: 16'

Umbrella Weight: 286 lbs

Required Base: 700 lbs

### 20'X20'

Size: 19'8" x 19'8"; Height: 17'9"

Umbrella Weight: 330 lbs

Required Base: 700 lbs



## Some of our clients







**RD USA**

P.O. Box 337, Littleton, CO 80160, USA

Tel 1-720-283-3327, [info@rd-usa.com](mailto:info@rd-usa.com), [www.rd-usa.com](http://www.rd-usa.com)