

RD Italia

idea • forma • funzione



OUTDOOR
FURNISHINGS

USA COLLECTION

Powder Coat Finishes

TEXTURED COLORS

new
2020



RAL 1032
Broom Yellow



RAL 6021
Pale Green



RAL 6027
Light Green



RAL 3016
Coral Red



SHINY BLACK



ANTHRACITE



RAL 9016
White



BRONZE



RAL 7039
Quartz gray



CORTEN

BRIGHT COLORS



RAL 2011
Deep Orange



RAL 1018
Zinc Yellow



RAL 5015
Sky Blue



INDUSTRIAL

RD ITALIA

RD Italia's manufacturing plant is located in the town of Breganze, near Venice, Italy. Thanks to the use of well established automated processes and production flexibility, RD Italia is able to quickly satisfy it's customer's requests and needs.

The quality of the products manufactured by RD Italia is the result of research and innovation.

The constant application of the latest technology and the proven expertise of our partners in the area, to whom we entrust important stages of production, guarantee the solid performance and durability of our products.

All of our products are "Made in Italy" using quality steel with a high recycled content. Our steel is treated with a hot dipped galvanized zinc underlayer 20 times thicker than the industry standard. This cathodic protection prevents corrosion and acts as a sealant should the steel be exposed due to accidental damage to the polyester powder coat finish. For good measure a coat of RD Rust Shield is applied to the whole furniture frame prior to powder coating. Our products are backed by a one year warranty against manufacturing defects.

RD Italia operates in the most important markets of the world and has earned international recognition as a leader in manufacturing Outdoor Furnishings for the contract industry.

In North America our products are distributed from South Carolina where we stock items in our best-selling Anthracite (Graphite) and Bronze powder coat colors. Other custom powder coat colors can be ordered for a small upcharge.

All of our chairs are stackable and our tables disassemble for ease of storage and shipping.

Replacement parts are available for all our commercial-grade umbrellas. We offer a factory-direct drop-ship program and competitive pricing. No order is too small!

RD USA

tel 720-283-3327

info@rd-usa.com

www.rd-usa.com





Fancy Leaf


MADE IN ITALY



STACKABLE CHAIR

Pre-galvanized steel frame and seat. Polyester powder coated finish.

CHAIR

Size: 20 ½ x 23 ¼ x H32 ¾ inch
52 x 59 x H83 cm

Seat Height: 17 ¾ inch - 45 cm

Weight: 11 lbs - 5 Kg

ARMCHAIR

Size: 20 ¾ x 23 ¼ x H32 ¾ inch
53 x 59 x H83 cm

Seat Height: 17 ¾ inch - 45 cm

Weight: 11.9 lbs - 5.4 Kg

BAR STOOL

Size: 21 ¾ x 23 ¼ x H46 ¾ inch
55 x 59 x H119 cm

Seat Height: 29 ½ inch - 75 cm

Weight: 14.1 lbs - 6.4 Kg

FINISH



Anthracite



see RAL codes on page 0






MADE IN ITALY

Dorio



STACKABLE CHAIR

Pre-galvanized steel frame and seat. Polyester powder coated finish.

CHAIR

Size: 18 x 22 $\frac{3}{4}$ x H33 inch
46 x 58 x H84 cm
Seat Height: 17 $\frac{3}{4}$ inch - 45 cm
Weight: 13.9 lbs - 6.3 Kg

ARMCHAIR

Size: 21 $\frac{1}{4}$ x 22 $\frac{3}{4}$ x H33 inch
54 x 58 x H84 cm
Seat Height: 17 $\frac{3}{4}$ inch - 45 cm
Weight: 17.2 lbs - 7.9 Kg

BAR STOOL

Size: 18 x 19 $\frac{3}{4}$ x H41 $\frac{3}{4}$ inch
46 x 50 x H106 cm
Seat Height: 29 $\frac{1}{2}$ inch - 75 cm
Weight: 15.5 lbs - 7.1 Kg

FINISH



Anthracite



see RAL codes on page 0





Lola


MADE IN ITALY



STACKABLE CHAIR

Pre-galvanized steel frame and seat. Polyester powder coated finish.

CHAIR

Size: 17 ¼ x 20 x H33 inch

44 x 51 x H84 cm

Seat Height: 17 ¾ inch - 45 cm

Weight: 10.8 lbs - 4.9 Kg

ARMCHAIR

Size: 21 ¼ x 22 ¾ x H33 inch

56 x 56 x H84 cm

Seat Height: 17 ¾ inch - 45 cm

Weight: 14.3 lbs - 6.6 Kg

BAR STOOL

Size: 19 ¾ x 19 ¾ x H41 ¾ inch

46 x 50 x H106 cm

Seat Height: 29 ½ inch - 75 cm

Weight: 17.2 lbs - 7.9 Kg

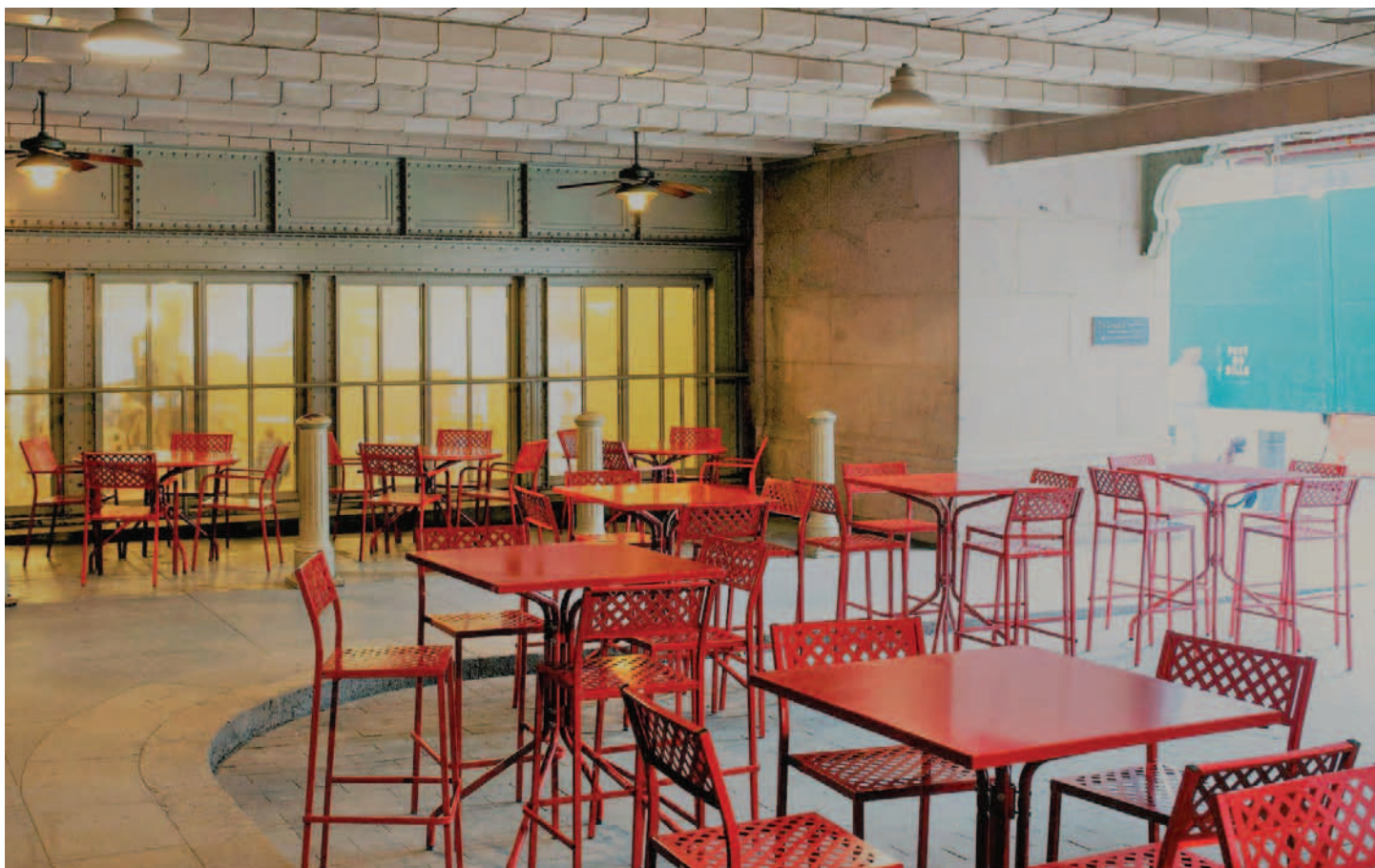
FINISH



Anthracite



see RAL codes on page 0





Syrene

MADE IN ITALY



STACKABLE CHAIR

Pre-galvanized steel frame and seat. Polyester powder coated finish.

CHAIR

Size: 21 $\frac{3}{4}$ x 24 $\frac{1}{2}$ x H33 inch
55 x 62 x H84 cm

Seat Height: 17 $\frac{3}{4}$ inch - 45 cm

Weight: 10.3 lbs - 4.7 Kg

ARMCHAIR

Size: 22 x 24 $\frac{1}{2}$ x H33 inch
56 x 62 x H84 cm

Seat Height: 17 $\frac{3}{4}$ inch - 45 cm

Weight: 11 lbs - 5 Kg

BAR STOOL

Size: 21 $\frac{3}{4}$ x 24 $\frac{1}{2}$ x H47 $\frac{1}{4}$ inch
55 x 62 x H120 cm

Seat Height: 29 $\frac{1}{2}$ inch - 75 cm

Weight: 13.9 lbs - 6.3 Kg

FINISH



Anthracite



see RAL codes on page 0





MADE IN ITALY

Sonia



STACKABLE CHAIR

Pre-galvanized steel frame and seat. Polyester powder coated finish.

CHAIR

Size: 21 $\frac{3}{4}$ x 24 $\frac{1}{2}$ x H33 inch
55 x 62 x H84 cm
Seat Height: 17 $\frac{3}{4}$ inch - 45 cm
Weight: 11.9 lbs - 5.4 Kg

ARMCHAIR 2 stretchers

Size: 22 x 24 $\frac{1}{2}$ x H33 inch
56 x 62 x H84 cm
Seat Height: 17 $\frac{3}{4}$ inch - 45 cm
Weight: 12.5 lbs - 5.7 Kg

BAR STOOL

Size: 21 $\frac{3}{4}$ x 24 $\frac{1}{2}$ x H47 $\frac{1}{4}$ inch
55 x 62 x H120 cm
Seat Height: 29 $\frac{1}{2}$ inch - 75 cm
Weight: 15.4 lbs - 7.0 Kg

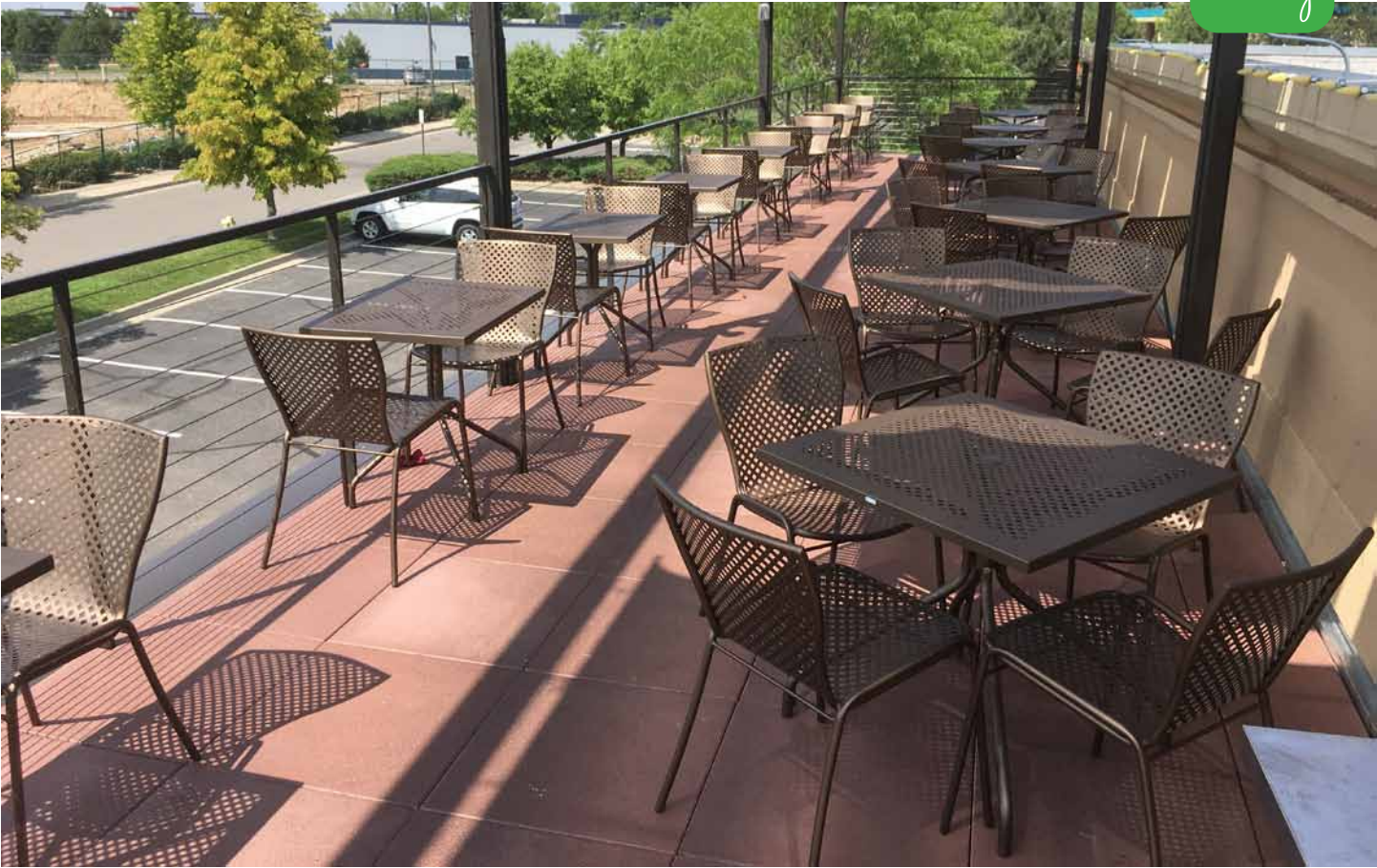
FINISH



Anthracite



see RAL codes on page 0





MADE IN ITALY

Pop



PATENTED

STACKABLE CHAIR

Pre-galvanized steel frame and seat. Polyester powder coated finish.

CHAIR

Size: 19 $\frac{3}{4}$ x 20 $\frac{3}{4}$ x H30 $\frac{1}{4}$ inch
50 x 53 x H77 cm

Seat Height: 17,5 inch - 44,5 cm

Weight: 11.2 lbs - 5.1 Kg

ARMCHAIR

Size: 21 $\frac{3}{4}$ x 20 $\frac{3}{4}$ x H30 $\frac{1}{4}$ inch
55 x 53 x H77 cm

Seat Height: 17,5 inch - 44,5 cm

Weight: 12.7 lbs - 5.75 Kg

BAR STOOL

Size: 19 $\frac{1}{4}$ x 18 x H39 $\frac{3}{4}$ inch
49 x 46 x H101 cm

Seat Height: 17,5 inch - 44,5 cm

Weight: 12.6 lbs - 5.7 Kg

FINISH



Anthracite



see RAL codes on page 0





MADE IN ITALY

La Rotonda

DESIGNER:
HARARI ITAMAR



PATENTED

STACKABLE CHAIR

Galvanized steel, powder coated, stacking.

CHAIR

Size: 21 ¾ x 20 x H33 inch

51 x 51 x H84 cm

Seat Height: 17 ¾ inch - 45 cm

Weight: 10.6 lbs - 4.8 Kg

ARMCHAIR

Size: 20 x 20 x H33 inch

55 x 51 x H84 cm

Seat Height: 17 ¾ inch - 45 cm

Weight: 11 lbs - 5 Kg

BAR STOOL

Size: 23 ½ x 22 ½ x H46 inch

60 x 57 x H117 cm

Seat Height: 29 ½ inch - 75 cm

Weight: 14 lbs - 6.4 Kg

FINISH



Anthracite



see RAL codes on page 0





MADE IN ITALY

Bistrò



STACKABLE CHAIR

Pre-galvanized steel frame and seat. Polyester powder coated finish

CHAIR

Size: 15 ¾ x 19 ¾ x H34 ¼ inch
40 x 50 x H87 cm
Seat Height: 18 inch - 46 cm
Weight: 10.80 lbs - 4.9 Kg

BAR STOOL

Size: 15 ¾ x 19 ¾ x H42 ½ inch
40 x 50 x H108 cm
Seat Height: 29 ½ inch - 75 cm
Weight: 13.20 lbs - 6 kg

FINISH



see RAL codes on page 0





MADE IN ITALY

Mirabella



STACKABLE CHAIR

Pre-galvanized steel frame and seat. Polyester power coated finish.

CHAIR

Size: 21 x 22 ½ x H33 ¾ inch
54 x 57 x H86 cm

Seat Height: 17 ¾ inch - 45 cm

Weight: 12.3 lbs - 5.6 Kg

ARMCHAIR

Size: 21 x 22 ½ x H33 ¾ inch
54 x 57 x H86 cm

Seat Height: 17 ¾ inch - 45 cm

Weight: 13.2 lbs - 6.0 Kg

BAR STOOL

Size: 20 ¾ x 22 ½ x H42 inch
53 x 57 x H107 cm

Seat Height: 17 ¾ inch - 45 cm

Weight: 14.3 lbs - 6.5 Kg

FINISH



see RAL codes on page 0





MADE IN ITALY

Fiona



STACKABLE CHAIR

Pre-galvanized steel frame and seat. Polyester powder coated finish.

CHAIR

Size: 16 ½ x 21 x H33 ½ inch

42 x 55 x H85 cm

Seat Height: 17 ¾ inch - 45 cm

Weight: 9.7 lbs - 4.4 Kg

ARMCHAIR

Size: 20 ½ x 21 x H33 ½ inch

52 x 55 x H85 cm

Seat Height: 17 ¾ inch - 45 cm

Weight: 11 lbs - 5 kg

FINISH



see RAL codes on page 0





Table Tops

MADE IN ITALY



TABLETOPS

Ø 23½, Ø 31½ inch - Ø 60, Ø 80 cm
23½x23½, 23½x31½, 27½x27½, 31½x31½ inch
60x60, 60x80, 70x70, 80x80 cm

FINISH



TOPALIT TABLETOP

Ø 31½ inch - Ø 80 cm
31½ x 31½ inch
80x80 cm

FINISH

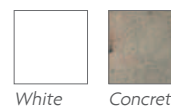




Table Bases

MADE IN ITALY



GIN XL 73



GIN XL 103



TABLEBASES

Pre-galvanized steel. Polyester powder coated finish.

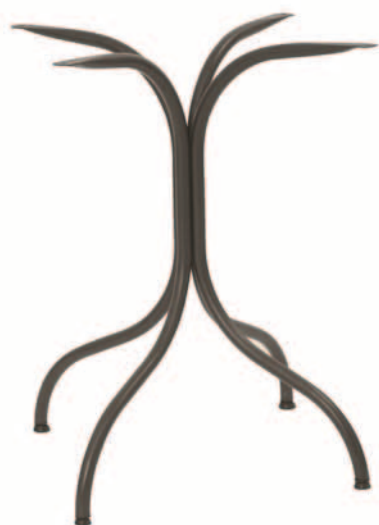
GIN XL 73: 17¾x17¾xH28¾ inch, 35.2 lbs - 45x45xH73 cm, 16.3 Kg

GIN XL 103: 17¾x17¾xH40 inch, 36.9 lbs - 45x45xH103 cm, 16.8 Kg

FINISH



Anthracite



BISTROT 70 BASE

Pre-galvanized steel frame. Polyester powder coated finish. Four adjustable glides.

27½ x 27½ x H28 inch, 7.7 lbs – 70 x 70 x H71 cm, 3.5 Kg

Suitable for most tabletops:

23½ x 31½, 31½ x 31½ inch - 60 x 80, 80 x 80 cm

FINISH



Anthracite



Dorio

MADE IN ITALY



DORIO 120H



DORIO 60H



DORIO 60



DORIO 80



DORIO 120

TALL TABLE

Pre-galvanized steel frame and steel top. Polyester powder coated finish. Two adjustable glides.

DORIO 60H (24"X32") TALL

Size: 23 ½ x 31 ½ x H41 inch
60 x 80 x H105 cm
Weight: 42 lbs - 19 Kg

DORIO 120H (48"X32") TALL

Size: 31 ½ x 47 ¼ x H41 inch
80 x 120 x H105 cm
Weight: 60 lbs - 27.3 Kg

FINISH



Anthracite



see RAL codes on page 0

STACKABLE TABLE

Pre-galvanized steel frame and d steel top. Polyester powder coated finish. Two adjustable glides.

DORIO 60 (24"X32")

Size: 23 ½ x 31 ½ x H29 ½ inch
60 x 80 x H75 cm
Weight: 32 lbs - 14.5 Kg

DORIO 80 (32"X32")

Size: 31 ½ x 31 ½ x H29 ½ inch
80 x 80 x H75 cm
Weight: 36 lbs - 16.5 Kg

DORIO 120 (48"X32")

Size: 31 ½ x 47 ¼ x H29 ½ inch
80 x 120 x H75 cm
Weight: 46 lbs - 20.8 Kg





Bistrot

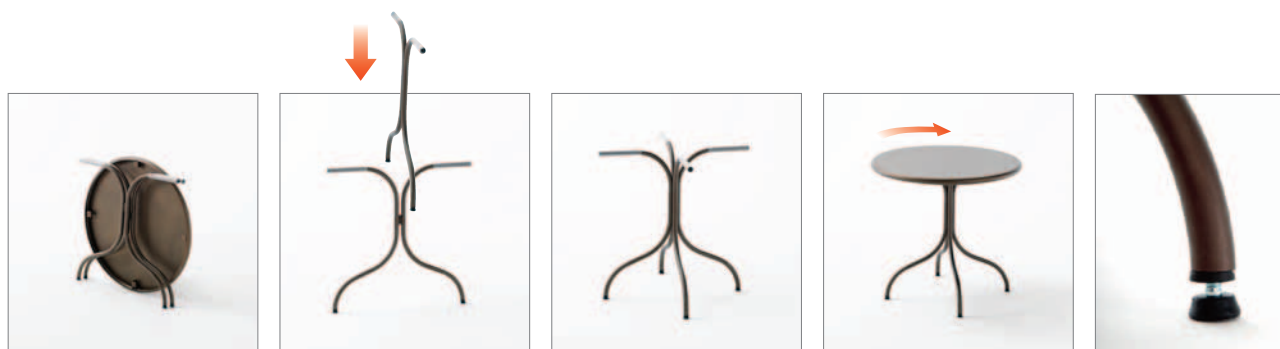
MADE IN ITALY



BISTROT 80T



BISTROT 80L



DISASSEMBLABLE TABLE

Pre-galvanized steel frame and punched or full steel top. Polyester powder coated finish. Four adjustable glides.

BISTROT 80T (32" ROUND)

Size: Ø31 ½ x H29 ½ inch

Ø80 x H75 cm

Weight: 20.7 lbs - 9.4 Kg

BISTROT 80L (32" ROUND)

Size: Ø31 ½ x H29 ½ inch

Ø80 x H75 cm

Weight: 22.4 lbs - 10.4 Kg

FINISH



Anthracite



see RAL codes on page 0





MADE IN ITALY

Estate



ESTATE 60



ESTATE 80



ESTATE 80H

TABLE

Pre-galvanized steel frame and punched steel top. Polyester powder coated finish. Four adjustable glides.

FINISH



Anthracite

ESTATE 60 (24"X32")

Size: 23 ½ x 31 ½ x H29 ½ inch
60 x 80 x H75 cm
Weight: 19.4 lbs - 8.8 Kg

ESTATE 80 (32"X32")

Size: 31 ½ x 31 ½ x H29 ½ inch
80 x 80 x H75 cm
Weight: 30.4 lbs - 13.8 Kg

ESTATE 80H (32"X32") TALL

Size: 31 ½ x 31 ½ x H40 ½ inch
80 x 80 x H103 cm
Weight: 33.5 lbs - 15.2 Kg



MADE IN ITALY

tables

Estate



ESTATE 110



ESTATE 90



ESTATE 120

STEEL TABLE

Pre-galvanized steel frame and punched steel top. Polyester powder coated finish. Four adjustable glides.

ESTATE 90 (36"X36")

Size: 35 ½ x 35 ½ x H29 ½ inch
90 x 90 x H75 cm
Weight: 33 lbs - 15 Kg

ESTATE 110 (43" ROUND)

Size: Ø43 ¼ x H29 ½ inch
Ø110 x H75 cm
Weight: 41.9 lbs - 19 Kg

ESTATE 120 (48"X32")

Size: 47 ¼ x 31 ½ x H29 ½ inch
120 x 80 x H75 cm
Weight: 43 lbs - 19.5 Kg

FINISH



Anthracite



MADE IN ITALY

Venezia

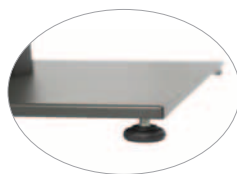


TABLE & UMBRELLA BASE COMBO

24 ½ x 24 ½ x H28 ½ inch, 90 lbs – 62 x 62 x H72 cm, 40 Kg

Suitable for most tabletops with umbrella hole:

31½ x 31½, 35½ x 35½ inch - 80 x 80, 90 x 90 cm



Marina

by Scolari



MARKET UMBRELLA

Commercial grade powder coated aluminum frame.

Sunbrella canopy options. Pole fits in tables.

7'X7'

Size: 6'7" x 6'7", Height: 8', Pole: Ø 1 9/16"

Umbrella Weight: 20 lbs

Low-profile Galvanized Base: 80 lbs

10'X10' Telescopic Clears tables when closed

Size: 9'10" x 9'10", Height: 9'2", Pole: Ø 1 9/16"

Umbrella Weight: 40 lbs

Low-profile Galvanized Base: 80 lbs

10' ROUND

Size: 9'10" Octagon, Height: 8', Pole Ø 9/16"

Umbrella Weight: 26 lbs

Low Profile Galvanized Base: 80 lbs



Napoli

by Scolaro



BTB Ground Mount

CANTILEVER UMBRELLA

Commercial grade powder coated aluminum frame.
Rotates 360° **Sunbrella canopy options.**

10'X10'

Size: 9'10" x 9'10", Height: 10'2"
Umbrella Weight: 86 lbs
Required ballast: 265 lbs

10'X13'

Size: 9'10" x 13'1", Height: 10'2"
Umbrella Weight: 88 lbs
Required ballast: 530 lbs



Astro

by Scolari



RETRACTABLE UMBRELLA

Commercial grade powder coated aluminum frame. Rotates 360°. Smooth hydraulic gas piston movement.

Sunbrella canopy options. LED light option.

10'X10'

Size: 9'10"x9'10", Height: 9'4"

Umbrella Weight: 99 lbs

Required ballast + Cover: 600 lbs

10'X13'

Size: 9'10"x 13'1", Height: 9'4"

Umbrella Weight: 120 lbs

Required ballast + Cover: 600 lbs



Dual T & Dual V

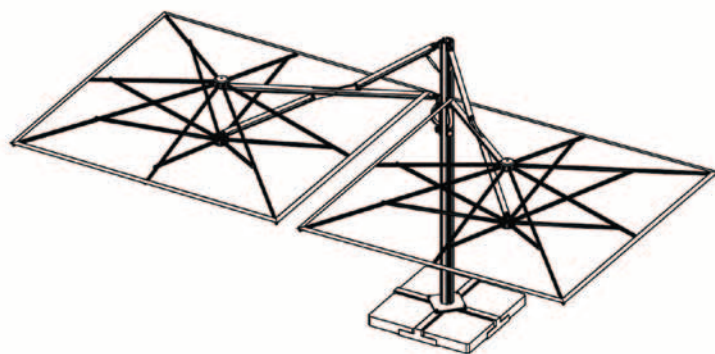
by Scolaro



DUAL T



BTB Ground Mount



DUAL V

DOUBLE RETRACTABLE UMBRELLA

Commercial grade powder coated aluminum frame.

Smooth hydraulic gas piston movement.

Sunbrella Canopy options. LED light option.

10'X20'

Size: 9'10" x 19'8", Height 9'4"

Umbrella Weight: 152 lbs

Required ballast + Cover: 600 lbs

13'X26' (DUAL T ONLY)

Size: 13'1" x 26'2", Height 9'4"

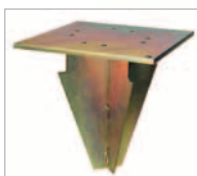
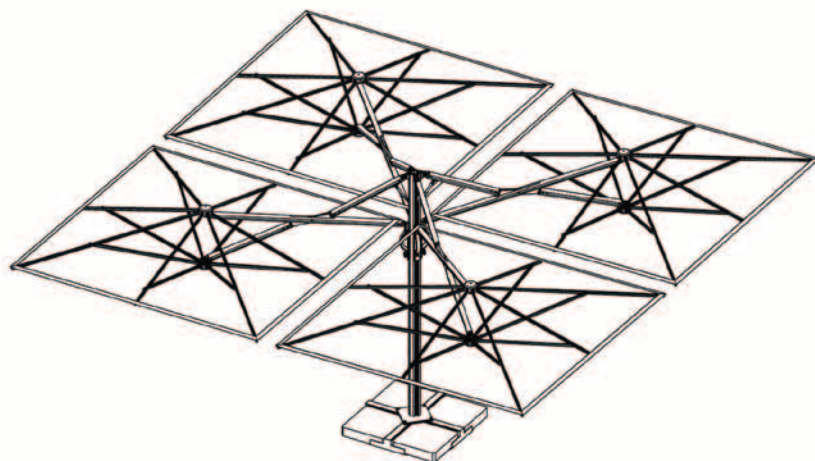
Umbrella Weight: 156 lbs

Required ballast + Cover: 600 lbs



Quattro

by Scolari



BTB Ground Mount

QUADRUPLE RETRACTABLE UMBRELLA

Commercial grade powder coated aluminum frame.

Smooth hydraulic gas piston movement.

Sunbrella Canopy options. LED light option.

20'X20'

Size: 19'8" x 19'8", Height 9'4"

Umbrella Weight: 198 lbs

Required ballast + Cover: 600 lbs





Capri

by Scolaro



BTB Ground Mount

GIANT TELESCOPIC UMBRELLA

Commercial grade powder coated aluminum frame. Sunbrella canopy options.

Clears tables when closed. LED light option.

13'X13'

Size: 13'1" x 13'1"; Height: 10'6"

Umbrella Weight: 55 lbs

Required Base: 160 lbs

17'X17'

Size: 16'5" x 16'6"; Height: 16'

Umbrella Weight: 286 lbs

Required Base: 700 lbs

20'X20'

Size: 19'8" x 19'8"; Height: 17'9"

Umbrella Weight: 330 lbs

Required Base: 700 lbs



Some of our clients





RD USA

P.O. Box 337, Littleton, CO 80160, USA

Tel 1-720-283-3327, Fax 1-810-398-6821, info@rd-usa.com, www.rd-usa.com